



# Veteranprodukter AB

Veteranprodukter AB  
 Industrivägen 7  
 SE-513 32 FRISTAD  
 SWEDEN

Tel: +46-33-206464  
 Fax: +46-33-269132  
 Email: info@vp-autoparts.com

## Decals

Observe! The decals are *not* in their natural size.



101



102



103



104



105



106



107



108



109



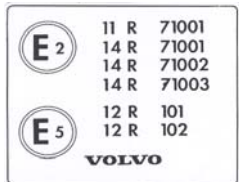
110



111



112



113



114



115



116



117



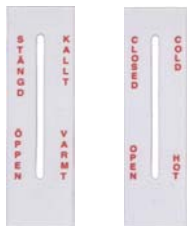
118



119



120



121



122



123



124



125



126



127

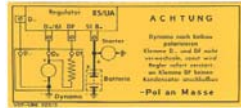




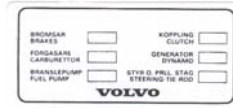
157

OBSERVERA!  
Denna vagn har en bakvagn med stift-  
rembräda och Anti-Lock. Vid ett  
stift uppdrift bakvagnen för hand  
eller med motor. Vagnen kan i så  
fall glida av framkraften eller bakken  
och falla ned.  
Drag åt handbromsen vid haltbryter!  
OBS! Speciellt på skott svindning.  
AB Volvo, Göteborg

158



159



160

VEHICLE EMISSION CONTROL INFORMATION

MODEL	YEAR	CLASS	EMISSIONS
S40-244	900	2.0	1.0
S40	900	2.0	1.0
S40	900	2.0	1.0
S40	900	2.0	1.0
S40	900	2.0	1.0
S40	900	2.0	1.0
S40	900	2.0	1.0
S40	900	2.0	1.0
S40	900	2.0	1.0
S40	900	2.0	1.0

161

VEHICLE EMISSION CONTROL INFORMATION  
MANUFACTURER: VOLVO  
ENGINE: VOLVO B 230 E  
ENGINE SPEED: 2000 RPM  
GROSS POWER: 100 kW  
IGNITION TIMING: 10° BTDC AT 800 RPM  
VEHICLE NOT CONNECTED AT TRANSMISSION POSITION: NEUTRAL  
THIS VEHICLE CONFORMS TO U.S. EPA OF NEW AND CALIFORNIA STATE REGULATIONS APPLICABLE TO 1997 MODEL YEAR NEW MOTOR VEHICLES

162



163



164



165

MILEAGE WHEN INSTALLED EQUIPPED WITH CHAMPION SPARK PLUGS PLUG TYPE

166

IMPORTANT WHEN RESETTING TRIP COUNTERS ROTATE KNOB CLOCKWISE UNTIL ALL COUNTERS ARE AT ZERO.

167



168

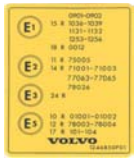
UPPLYSNINGAR OM AVGASKONTROLL

MOTORMODEL	MOTORSTYR	CHASSI
857E	CHASSI	2644
TONGÅRDSBY 800 2.0 2000		
VEHICLE EMISSION CONTROL		
MILEAGE 0-7.5 1000 700-800 200		
VEHICLE EMISSION CONTROL		
VEHICLE EMISSION CONTROL		

169

VEHICLE EMISSION CONTROL INFORMATION  
MANUFACTURER: VOLVO  
ENGINE: VOLVO B 230 E  
ENGINE SPEED: 2000 RPM  
GROSS POWER: 100 kW  
IGNITION TIMING: 10° BTDC AT 800 RPM  
VEHICLE NOT CONNECTED AT TRANSMISSION POSITION: NEUTRAL  
THIS VEHICLE CONFORMS TO U.S. EPA OF NEW AND CALIFORNIA STATE REGULATIONS APPLICABLE TO 1997 MODEL YEAR NEW MOTOR VEHICLES

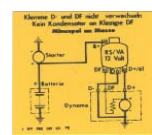
170



171

Jag GÅR hellre än jag kör japanskt

172



173



174



175



176



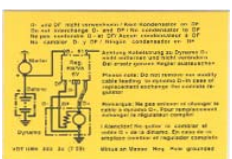
177



178



179



180



181



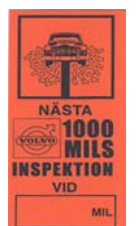
186



187



188



189



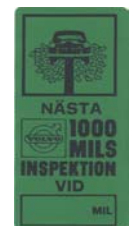
190



667698



191



192